

Natural Gas Supply Chain

The U.S. natural gas supply chain moves American-made natural gas from both conventional and unconventional (shale) reserves to consumers around the country. Natural gas heats our homes, powers our businesses, supplies our factories and beyond. In 2016, natural gas surpassed coal as the leading source of electricity in the U.S.

PRODUCTION

Using hydraulic fracturing, horizontal drilling, and other modern energy production techniques, U.S. energy companies extract natural gas from America's estimated 100-year supply.



Domestic natural gas production has grown 20% in just the last few years, making the U.S. the #1 producer in the world.

PROCESSING

Processing plants clean raw natural gas and separate out water, sand and natural gas liquids (NGLs). Processing produces "pipeline quality" dry natural gas, also known as methane.



Quality dry natural gas can be used as fuel by residential, commercial, and industrial consumers.

TRANSPORT

The U.S. natural gas pipeline network is a highly integrated transmission and distribution grid that can transport natural gas to and from nearly any location in the U.S.

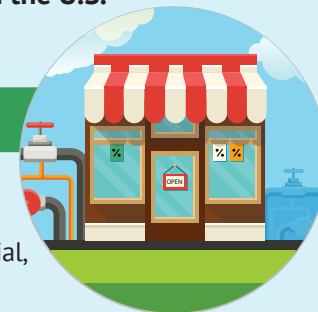


There are 305,000 miles of natural gas interstate and intrastate transmission pipelines.

NEW MEXICO
ENERGY
FORUM

LOCAL GAS COMPANY

Local distribution companies own and operate the network of pipes that carry natural gas from high-pressure trunk lines to residential, commercial, electric generation, and industrial consumers.



Natural gas consumption increased 43.1% from 2005 to 2014, while greenhouse gas emissions from electrical generation fell 15.1%.

TRANSPORT

Pipelines are once again used to move consumer-ready natural gas from hubs to retail sales outlets, including local gas companies and large commercial users.



The U.S. natural gas pipeline grid comprises more than 210 natural gas pipeline systems.

HUBS

Market hubs, where natural gas is priced and traded, are located at the intersection of major pipeline systems.



The principal hub within the United States is the Henry Hub in Louisiana, which interconnects with nine interstate and four intrastate pipelines.